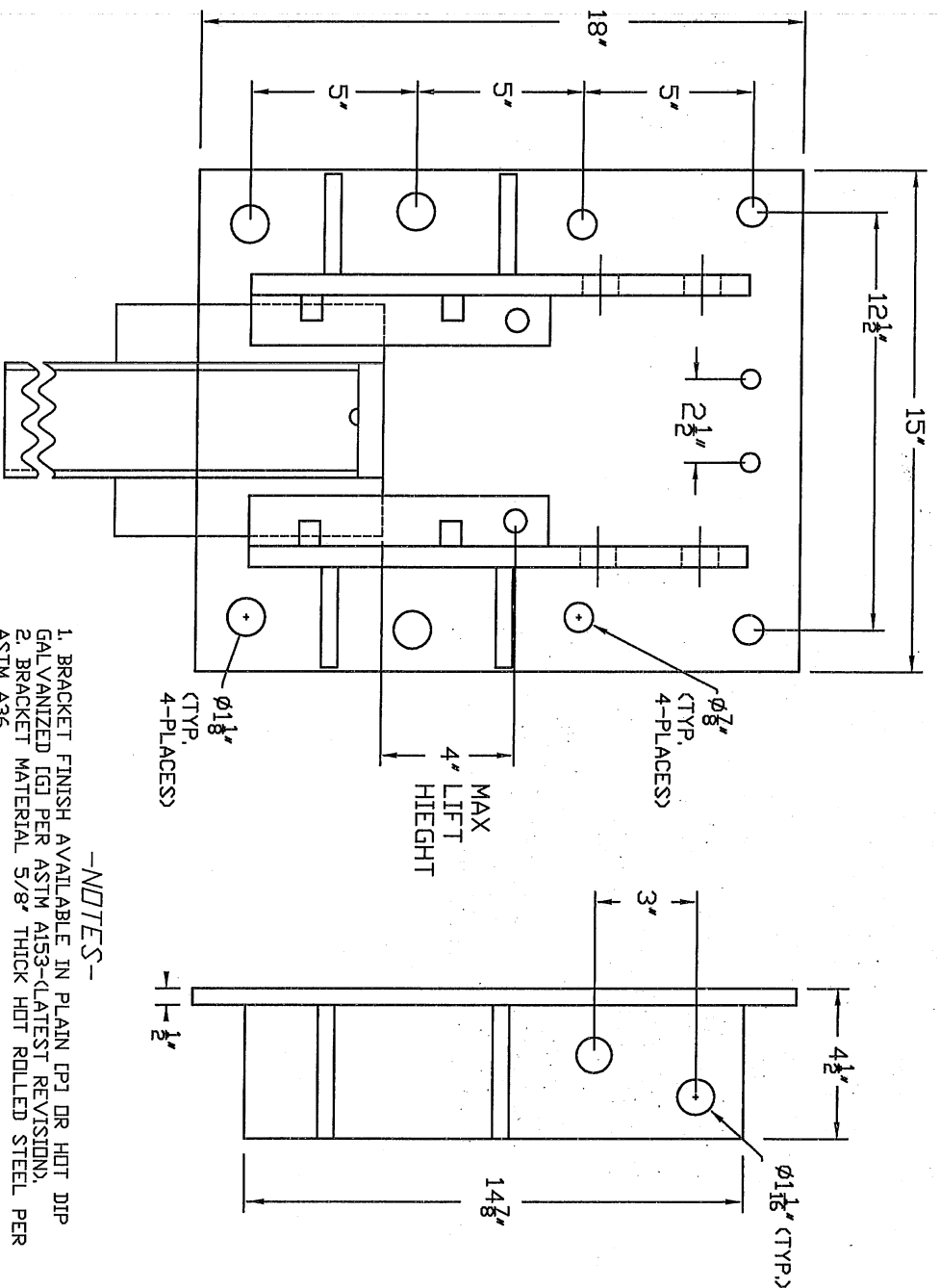
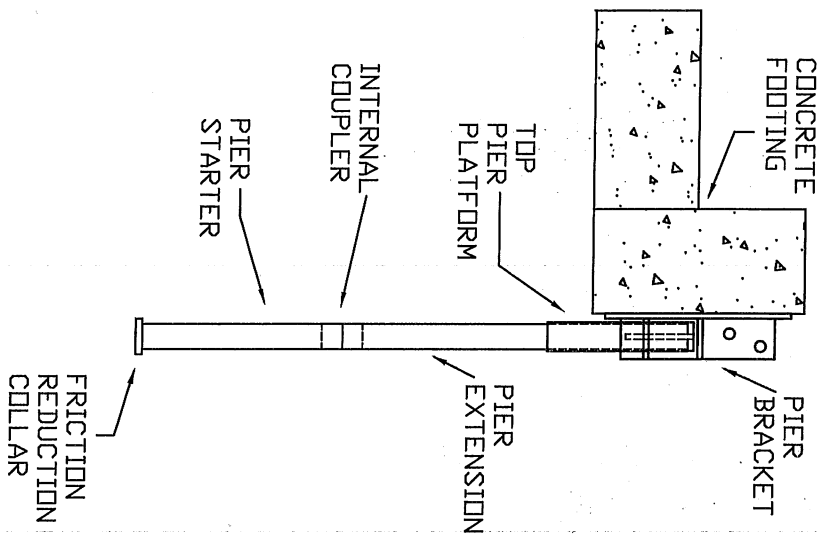


AP-2-PPB-2875 PLATE PIER BRACKET



TYPICAL INSTALLATION

AP-2-PPB-2875 SYSTEM COMPONENTS

Catalog No.	Pier System	Bracket (Qty)	Top Pier Platform (Qty)	Pier Section (Qty)	Starter Section (Qty)	Working Capacity (kips)	Ultimate Capacity (kips)
PSA4048	AP-2-PP-2875.165[P][14'-0]	1	1	3	1	30	60
PSA4809	AP-2-PP-2875.165[PA][14'-0]	1	1	3	1	30	60
PSA4484	AP-2-PP-2875.165[GAL][14'-0]	1	1	3	1	30	60
PSA4812	AP-2-PP-2875.165[G][14'-0]	1	1	3	1	30	60

Notes:

1 P = Plain Steel, A = Flow Coat Corrosion Protection, G = Hot Dipped Galvanized, M = Modified Pier

ATLAS

CONFIDENTIAL: THIS DRAWING AND ITS CONTENTS ARE CONFIDENTIAL AND THE POWER SYSTEMS, INC. NO FURTHER REPRODUCTION OR DISTRIBUTION OF THIS DRAWING WITHOUT THE WRITTEN CONSENT OF POWER SYSTEMS, INC. IS PERMITTED. ALL RIGHTS RESERVED UNDER THE COPYRIGHT LAWS.



AP-2-PPB-2875 BRACKET

TITLE	DWG NO.	DATE / PART / ASST. NO.	REV
DO NOT SCALE THIS DRAWING	A SA3991	SEE DWG	A
DEN BY SMS	DATE 3/9/07	SHEET 1 OF 1	

NOTES-

- BRACKET FINISH AVAILABLE IN PLAIN CPJ OR HOT DIP GALVANIZED (G) PER ASTM A153-(LATEST REVISION).
- BRACKET MATERIAL 5/8" THICK HOT ROLLED STEEL PER ASTM A36.
- ALL WELDING TO BE DONE BY WELDERS CERTIFIED UNDER SECTION 5 OF THE AWS CODE D11.
- MANUFACTURER TO HAVE IN EFFECT INDUSTRY RECOGNIZED WRITTEN QUALITY CONTROL FOR ALL MATERIALS AND MANUFACTURING PROCESSES.
- TWO 5/8" DIA PIER PINS (PART# PSA1030) CONFORMING TO ASTM A29 GRADE 10B21 ARE REQUIRED FOR EACH PIER.
- LIFT SHIMS (PART# PSA1031 OR PSA1032) SHALL BE USED AS REQUIRED UP TO A MAXIMUM HEIGHT OF 4 INCHES.
- REFER TO DRAWING SA1002 FOR TOP PIER PLATFORMS.
- REFER TO DRAWING SA1003 FOR PIER SECTIONS.