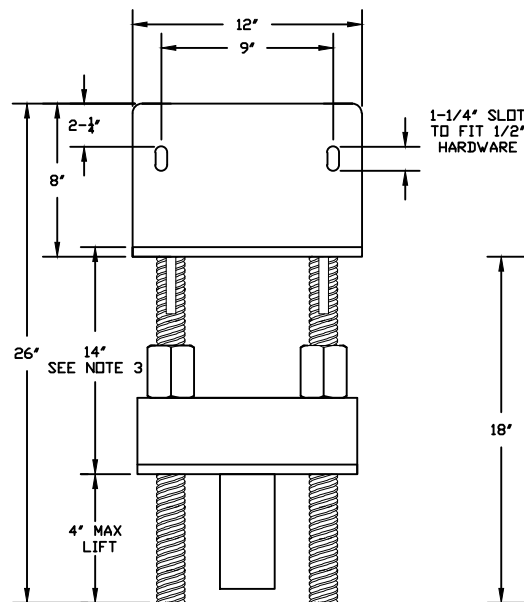
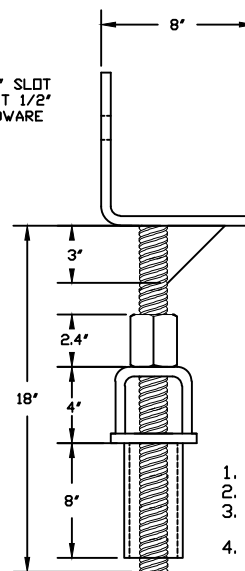


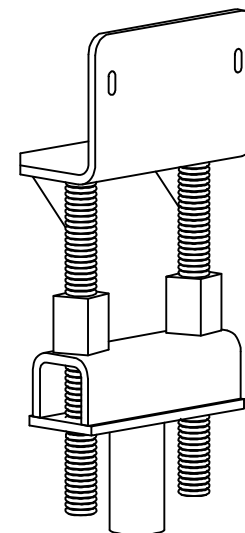
TYPICAL INSTALLATION
FOUNDATION REPAIR BRACKET



REAR VIEW



SIDE VIEW



-NOTES-

1. HOT DIP GALVANIZE PER ASTM A153-(LATEST REVISION).
2. ASSEMBLE COMPLETE AS SHOWN IN SIDE VIEW.
3. RECOMMENDED ANCHOR SHAFT CUTOFF LEVEL BELOW THE BOTTOM OF THE FOOTING IS 14.5' FOR MAXIMUM LIFT DISTANCE.
4. MATERIAL SPECIFICATIONS:
BRACKET BODY : 3/8" THICK STEEL PER ASTM A572 GRADE 50.
T-PIPE TUBE BODY : STEEL PER ASTM A572 GRADE 50, LATEST REV.
T-PIPE PIPE : STEEL PIPE PER ASTM A500 LATEST REV.
LIFTING STUDS: WILLIAMS FORM #11 GRADE 90.
5. A FACTOR OF SAFETY OF 2 YIELDS A SAFE WORKING LOAD.
6. THE CAPACITY OF THE UNDERPINNING SYSTEM IS A FUNCTION OF MANY INDIVIDUAL ELEMENTS, INCLUDING THE CAPACITY OF THE FOUNDATION, BRACKET, PIER SHAFT, HELICAL PLATE, AND BEARING STRATA, AS WELL AS THE STRENGTH OF THE FOUNDATION TO BRACKET CONNECTION AND THE QUALITY OF PIER INSTALLATION.

SHAFT SIZE	CAT. NUMBER	MINIMUM ULTIMATE STRENGTH	WORKING LOAD
RS2875	C1500840	72,000 LBS	36,000 LBS
RS3500	C1500841	91,000 LBS	45,500 LBS

CHANCE[®]
TOLERANCE CHART



HUBBELL[®] POWER SYSTEMS
POWER SYSTEMS, INC.

TITLE
BRACKET,
DIRECT JACK

CONFIDENTIAL: THIS DRAWING AND ITS CONTENTS ARE CONFIDENTIAL AND THE EXCLUSIVE PROPERTY OF HUBBELL POWER SYSTEMS. NO PUBLICATION, DISTRIBUTION OR COPIES MAY BE MADE WITHOUT THE WRITTEN CONSENT OF HUBBELL POWER SYSTEMS. HUBBELL POWER SYSTEMS UNPUBLISHED. ALL RIGHTS RESERVED UNDER THE COPYRIGHT LAWS.

SIZE	DWG NO.	CAT / PART / ASSY NO.	REV
SB	SA1500840	SEE CHART	A
DO NOT SCALE THIS DRAWING	DRN BY KSH	DATE 8/3/10	SHEET 1 OF 1